



BELLKARA

27.91 M | 2016 | EUR 4,900,000 | VAT PAID

DESCRIPTION

Her unique concept originates from the desire for unsurpassed freedom, love for the sea, and passion for sailing. An experienced sailor, the owner, had extraordinary yet precise requirements. A real challenge to all parties involved, project management was entrusted to Norbert Sedlacek, a world-renowned sailor whose experience from single-handed circumnavigation of the globe was invaluable to this project.

Performance oriented hull lines, powered by carbon rigging and advanced sails in combination with a lifting keel and the latest deck equipment, are the secret to Bellkara's excellent naval characteristics. She is fast, agile, and responsive, yet a luxurious cruiser delivering the highest level of comfort to the owner and his guests.

Her wide beam delivers outstanding interior volume divided into two zones, giving crew and guests their private space. The aft part of the yacht accommodates a spacious garage for an almost 5-meter long luxurious tender. A powerful 355 hp engine, large fuel tanks, strong hull, and unlimited sailing range make Bellkara ready for long-range cruising on open seas in any weather.

MAIN CHARACTERISTICS

Year :	2016	Fuel capacity:	4000 l
Overall Length:	27.91 m (91.7')	Fresh water capacity:	3000 l
Waterline Length:	27.40 m (89.11')	Grey/black water capacity:	267 l
Max Beam:	7.46 m (24.6')		
Draft Keel Up/Down	2.35/4.70 m (7 ft. 9 in.)	Navigation:	Raymarine
Displacement	85 t	Rigging:	Lorima
Ballast	16.75 t	Hydraulic system:	Cariboni
Builder:	Conrad Shipyard	Deck equipment:	Harken
Type :	Sloop with lifting keel	Sails:	Incidence
Hull material:	Aluminum		
		Main sail	230 m ²
Interior Design:	YCC & Conrad Shipyard	Genoa	200 m ²
Exterior Design:	YCC & Vincent Lebailly Yacht Design	Solent	90 m ²
Naval Architecture:	Vincent Lebailly Yacht Design	Code zero	260 m ²
Class:	Bureau Veritas	Gennaker	310 m ²
Flag:	Malta	Asymmetrical spinnaker	500 m ²
Engine:	1 x Cummins QSB 5.9 355 hp		
Cruising Speed on Engine:	10 kn		
Cabins:	3 cabins for 6 guests		
Crew:	4		
Generators:	2x Cummins 22,5 kW		





































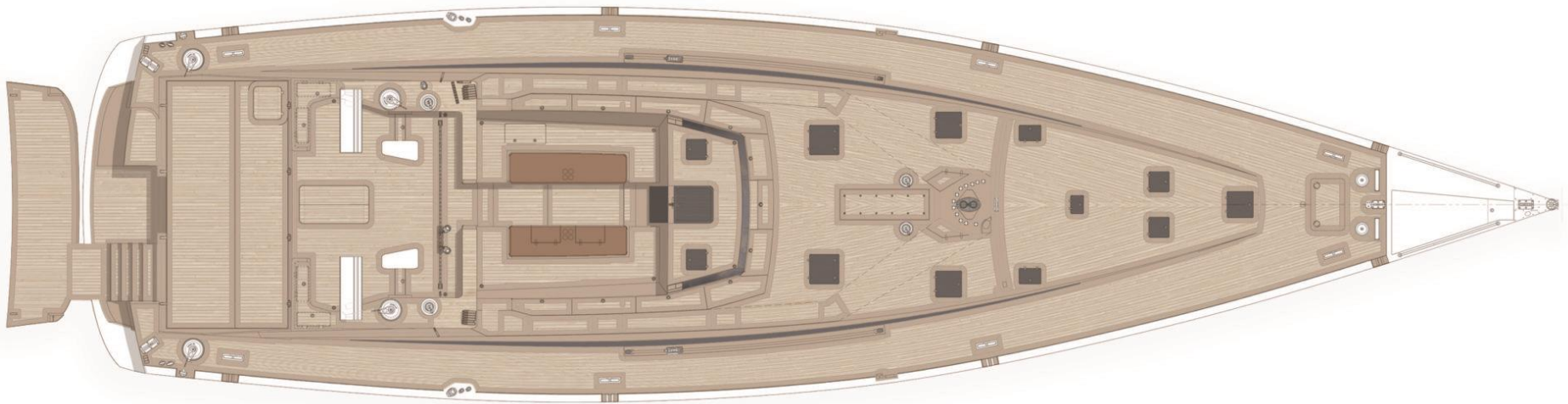




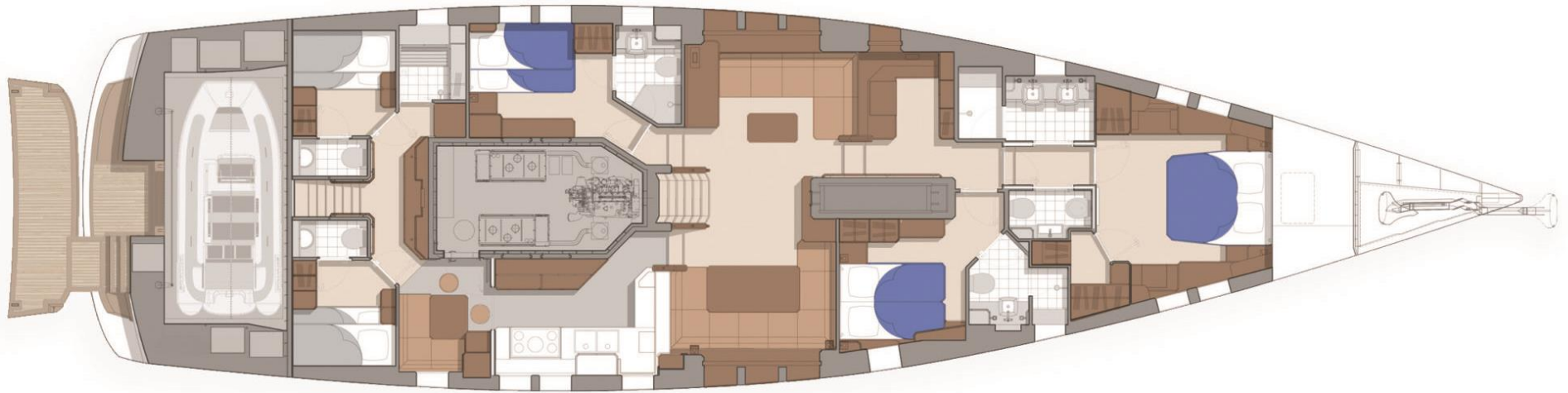


BELLKARA

LAYOUTS



MAIN DECK



LOWER DECK